

# Stockholm Economy

## Q3 2016

Q3 2016

December 2016



# Stockholm Economy

## Q3 2016

### About the report

The report is published each quarter by Stockholm Business Region. The report includes Stockholm County and the City of Stockholm.

Statistics used is collected from Statistics Sweden, The Labour Exchange and The Swedish Companies Registration Office.

The report can be downloaded from:

<http://www.stockholmbusinessregion.se/en/facts--figures/#facts-about-business>

The Stockholm Region is defined as Stockholm County, Uppsala County, Södermanland County, Östergötland County, Örebro County, Västmanland County, Gävleborg County and Dalarna County. Individual county reports for the above mentioned can be found in Swedish here: <http://www.stockholmbusinessalliance.se/konjunkturrapporter/>

Questions can be addressed to Stefan Frid at Invest Stockholm.  
Publisher: Olle Zetterberg.

## Positive figures for Stockholm

During the third quarter 2016 Stockholm's economic growth continued. Aggregated gross pay data show positive growth figures both for Stockholm County and the City of Stockholm compared to the same quarter 2015.

In total 4 966 new companies were registered in Stockholm County during the third quarter of 2016, whereof the City of Stockholm accounted for 2 965. This represents a 2 % decrease for the county and a 1 % decrease for the city compared to the third quarter 2015.

During the last quarter the number of persons employed increased as did the number of listed positions. The largest increase of listed positions were in the financial sector and the business services sector. The number of people given notice increased in Stockholm county but decreased in the city. The unemployment rate continued to decrease both in Stockholm County and the City of Stockholm compared with the same quarter 2015.

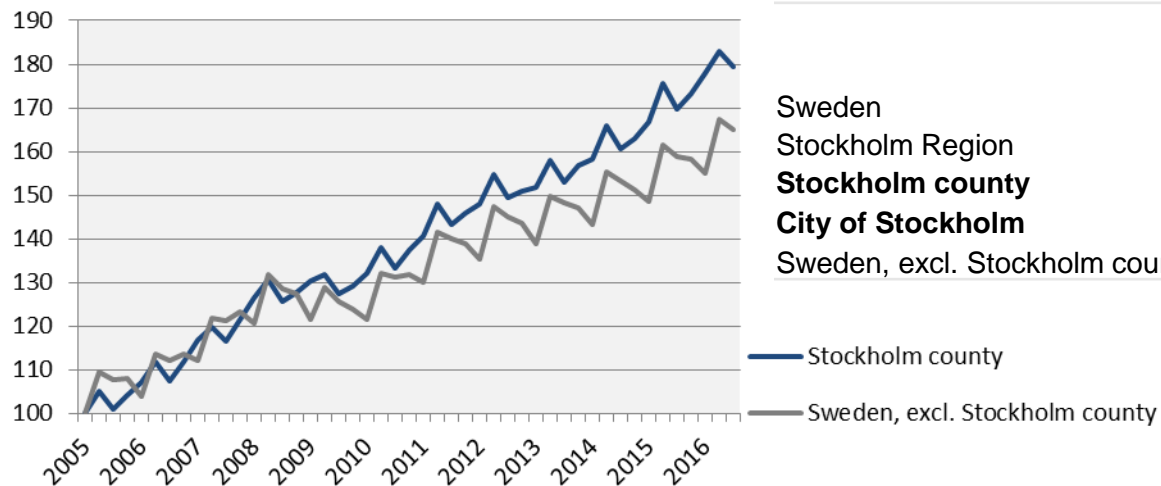
The last four quarters the number of residents has increased by 36 600 in Stockholm County, of which the City of Stockholm accounted for 11 400, representing a 2 % increase for the county and 1 % for the city.

The number of housing projects increased in both the county and the City of Stockholm in relation to the same quarter last year. In total, construction of 17 000 apartments were started in Stockholm County during the last four quarters, whereof about 6 500 in the City of Stockholm.

Olle Zetterberg  
CEO Stockholm Business Region

# Economic growth, private sector

Index 100 = 2005 Q1

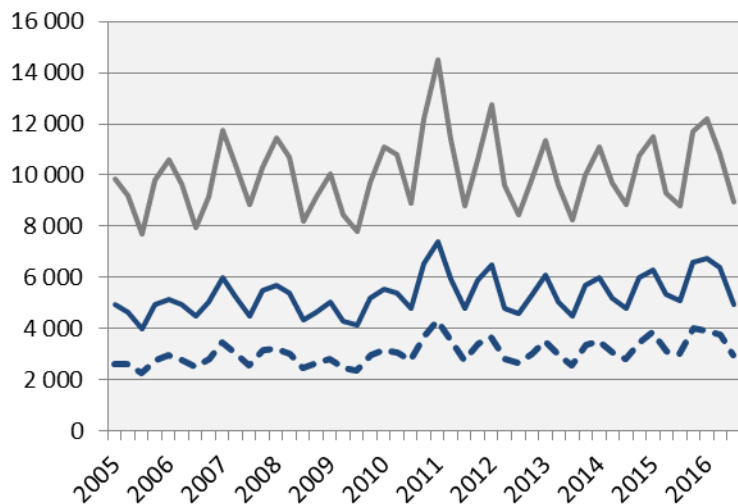


	2016 Q3	Change (%) since,		
	Billion cr.	2005 Q1	2010 Q1	2015 Q3
Sweden	301.5	69.5	35.8	4.5
Stockholm Region	153.7	74.3	35.7	5.0
<b>Stockholm county</b>	<b>99.1</b>	<b>79.4</b>	<b>35.8</b>	<b>5.6</b>
<b>City of Stockholm</b>	<b>64.8</b>	<b>n.d.</b>	<b>37.4</b>	<b>6.5</b>
Sweden, excl. Stockholm county	202.4	65.0	35.9	3.9

# Economic growth, 2016 Q3

	Stockholm county				City of Stockholm			
	Billion cr.	Growth (%) since,			Billion cr.	Growth (%) since,		
		2009 Q1	2010 Q1	2015 Q3		2009 Q1	2010 Q1	2015 Q3
<b>Total</b>	<b>121.5</b>	<b>37.1</b>	<b>35.3</b>	<b>5.5</b>	<b>75.6</b>	<b>38.1</b>	<b>36.0</b>	<b>6.5</b>
Agriculture, forestry & fishing	0.2	54.1	36.1	-1.0	0.0	114.8	41.0	-2.8
Manufacturing, mining, quarrying & utilities	8.8	7.6	11.7	3.1	4.2	11.6	11.9	2.1
Energy & Environment	1.1	42.1	40.3	6.4	0.5	-11.0	-0.1	8.2
Construction	7.4	66.4	61.2	6.0	3.6	86.9	103.4	9.2
Trade	16.3	37.1	31.1	5.6	9.2	41.9	33.6	5.0
Transport	5.5	25.4	21.2	1.9	2.5	25.3	18.5	1.1
Accommodation & food services	3.7	100.6	86.5	7.0	2.6	96.3	84.5	7.2
Information & communication	12.4	32.8	37.4	11.9	10.3	40.5	45.7	12.9
Financial & insurance	7.7	-4.6	-2.7	-1.0	6.0	-8.8	-6.8	2.6
Real Estate	2.1	52.5	47.3	8.1	1.5	52.1	48.8	8.6
Business services	18.9	50.0	49.5	6.7	14.9	49.9	49.8	6.7
Public administration	0.1	42.6	29.1	-2.3	0.1	30.9	23.0	-4.9
Education	2.8	61.7	53.6	5.8	1.6	62.0	54.9	5.0
Health	8.0	85.8	66.5	6.5	4.6	83.3	61.3	7.7
Personal & cultural services	4.0	47.6	41.1	2.7	3.0	45.5	38.4	3.5
Unspecified	0.2	-15.2	0.8	-1.7	0.0	41.2	12.3	8.1
<b>Private sector</b>	<b>99.1</b>	<b>37.7</b>	<b>35.8</b>	<b>5.6</b>	<b>64.8</b>	<b>39.0</b>	<b>37.4</b>	<b>6.5</b>
State	8.6	37.4	33.9	4.4	6.0	32.4	27.5	4.9
Municipal	10.4	35.1	33.2	7.1	4.0	33.3	30.4	8.6
County council	3.3	25.7	32.5	0.7	0.9	33.3	21.2	3.6
<b>Public sector</b>	<b>22.4</b>	<b>34.5</b>	<b>33.4</b>	<b>5.0</b>	<b>10.8</b>	<b>32.8</b>	<b>28.0</b>	<b>6.1</b>

# The number of newly registered businesses

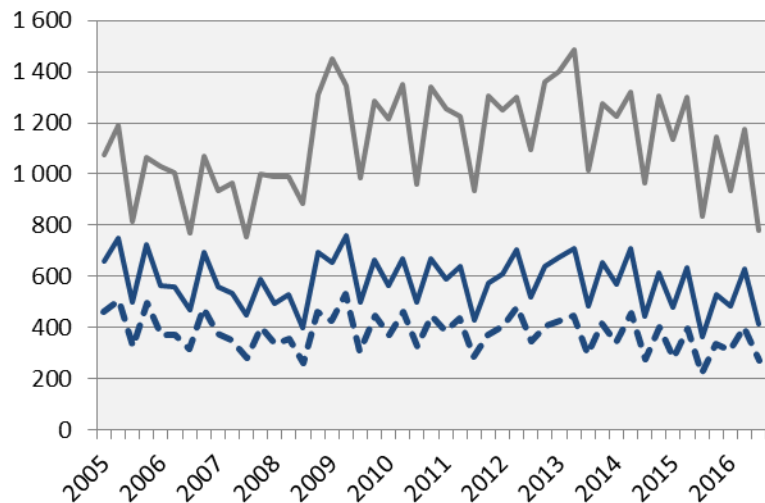


	2016 Q3		Yearly change*	
	Number	Ch., %	Number	Ch., %
Sweden	13 939	0.3	68 386	8.4
Stockholm Region	7 348	-1.2	36 293	8.5
<b>Stockholm county</b>	<b>4 966</b>	<b>-2.7</b>	<b>24 675</b>	<b>8.7</b>
<b>City of Stockholm</b>	<b>2 965</b>	<b>-1.3</b>	<b>14 661</b>	<b>8.9</b>
Sweden, excl. Stockholm county	8 973	2.0	43 711	8.3

\*Last four quarters

— Stockholm county  
- - - City of Stockholm  
— Sweden, excl. Stockholm county

# Company bankruptcies



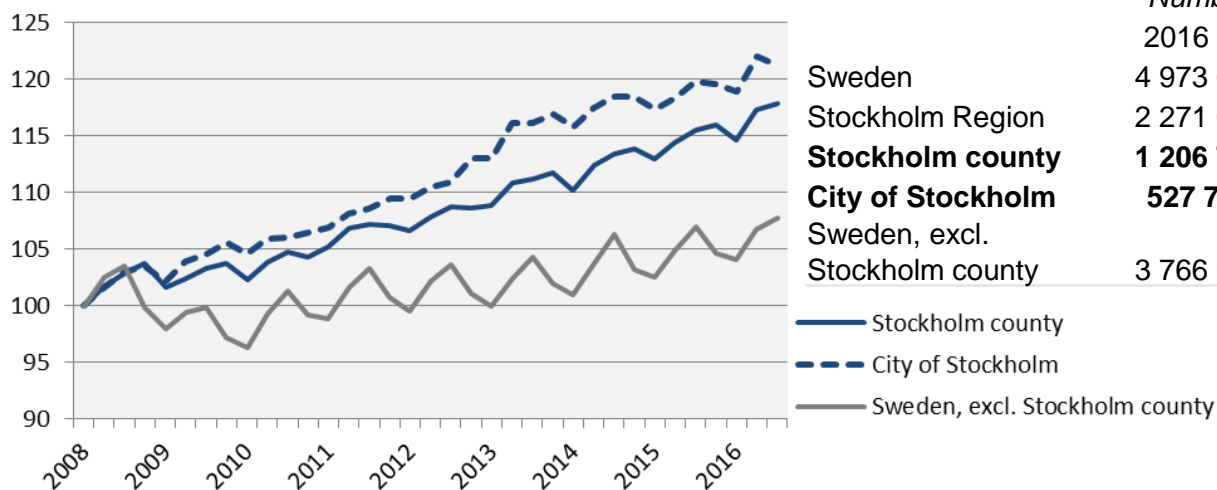
	2016 Q3		Yearly change*	
	Number	Ch., %	Number	Ch., %
Sweden	1 198	-0.2	6 099	-8.6
Stockholm Region	607	4.7	3 058	-8.9
<b>Stockholm county</b>	<b>416</b>	<b>14.0</b>	<b>2 060</b>	<b>-1.5</b>
<b>City of Stockholm</b>	<b>273</b>	<b>23.0</b>	<b>1 325</b>	<b>1.5</b>
Sweden, excl. Stockholm county	782	-6.5	4 039	-11.8

\*Last four quarters

— Stockholm county  
- - - City of Stockholm  
— Sweden, excl. Stockholm county

# Employment rate

Index 100 = 2008 Q1



Source: Statistics Sweden

	<i>Number</i>	<i>Growth</i>	<i>Growth (%) since,</i>		
	2016 Q3	Yearly ch.*	2008 Q1	2010 Q1	2015 Q3
Sweden	4 973 600	49 300	10.0	12.7	1.0
Stockholm Region	2 271 000	38 000	12.6	13.3	1.7
<b>Stockholm county</b>	<b>1 206 700</b>	<b>23 900</b>	<b>17.8</b>	<b>15.2</b>	<b>2.0</b>
<b>City of Stockholm</b>	<b>527 700</b>	<b>6 300</b>	<b>21.2</b>	<b>15.9</b>	<b>1.2</b>
Sweden, excl. Stockholm county					
Stockholm county	3 766 900	25 400	7.7	11.9	0.7

\*Last four quarters

— Stockholm county  
- - - City of Stockholm  
— Sweden, excl. Stockholm county

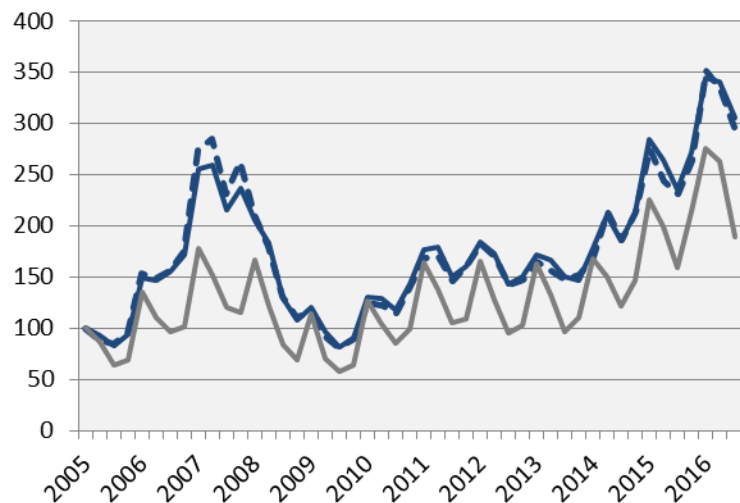
# The number of employed people in Stockholm County

	Number	<i>Growth</i>	<i>Growth (%) since,</i>		
	2016 Q3	Yearly ch.*	2008 Q1	2010 Q1	2015 Q3
<b>Total</b>	<b>1 206 700</b>	<b>23 900</b>	<b>17.8</b>	<b>15.2</b>	<b>2.0</b>
Agriculture, forestry & fishing	3 300	-400	3.1	3.1	-10.8
Manufacturing, mining, quarrying & utilities	60 900	2 800	4.6	4.3	4.8
Manufacturing of workshop products	29 600	2 300	3.5	-1.3	8.4
Construction	68 700	3 800	14.5	21.0	5.9
Trade	143 500	1 500	6.8	12.8	1.1
Transport	57 800	-1 100	8.9	6.1	-1.9
Accommodation & food services	49 000	200	36.9	32.1	0.4
Information & communication	96 400	6 200	26.2	21.7	6.9
Arts, entertainment, recreation & other services	72 600	5 300	16.2	13.4	7.9
Financial & insurance	299 600	3 000	24.3	16.6	1.0
Public administration	80 800	-100	24.5	13.0	-0.1
Education	119 300	-3 500	13.6	8.2	-2.9
Health	148 700	7 900	19.8	21.1	5.6
Unspecified	n.d.	n.d.	n.d.	n.d.	n.d.
Employed in Sweden	1 202 800	24 700	17.9	15.3	2.1
Employed abroad	4 000	-700	17.6	8.1	-14.9



# Number of recently listed positions

Index 100 = 2005 Q1



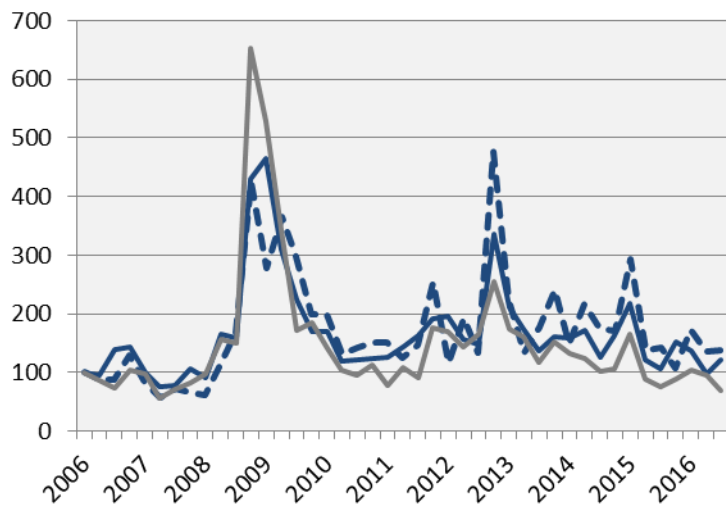
	2016 Q3		Yearly growth*	
	Number	Ch., %	Number	Ch., %
Sweden	272 641	22.3	1 277 107	28.1
Stockholm Region	140 328	25.0	619 581	25.9
<b>Stockholm county</b>	<b>92 573</b>	<b>29.6</b>	<b>382 478</b>	<b>26.4</b>
<b>City of Stockholm</b>	<b>59 924</b>	<b>28.0</b>	<b>251 789</b>	<b>29.2</b>
Sweden, excl. Stockholm county	180 068	18.9	894 629	28.9

— Stockholm county  
- - - City of Stockholm  
— Sweden, excl. Stockholm county

\*Last four quarters

# The number of people given notice

Index 100 = 2006 Q1



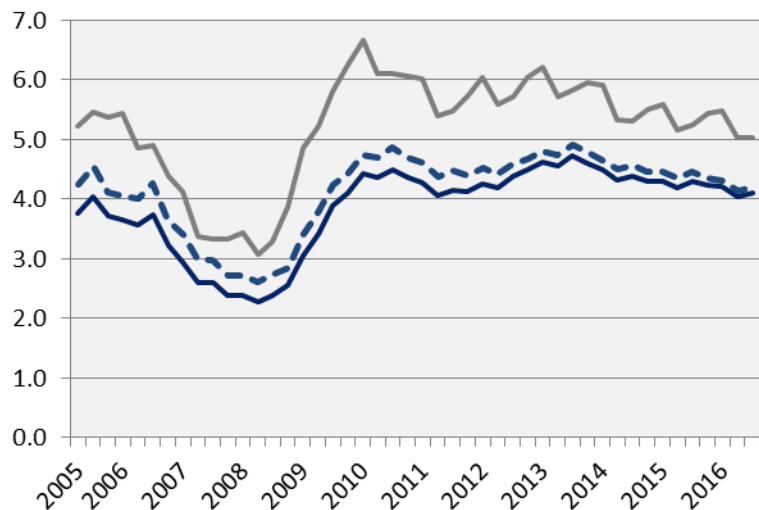
Source: The Labor Exchange

	2016 Q3		Yearly change*	
	Number	Ch., %	Number	Ch., %
Sweden	7 624	-1.2	36 825	-17.5
Stockholm Region	3 883	4.2	17 871	-18.0
<b>Stockholm county</b>	<b>2 457</b>	<b>13.5</b>	<b>10 270</b>	<b>-16.4</b>
<b>City of Stockholm</b>	<b>1 215</b>	<b>-2.9</b>	<b>4 892</b>	<b>-25.4</b>
Sweden, excl. Stockholm county	5 167	-7.0	26 555	-18.0

— Stockholm county  
- - - City of Stockholm  
— Sweden, excl. Stockholm county

\*Last four quarters

# Unemployment in relation to the population (%), 15-74 years



Source: The Labor Exchange and Statistics Sweden

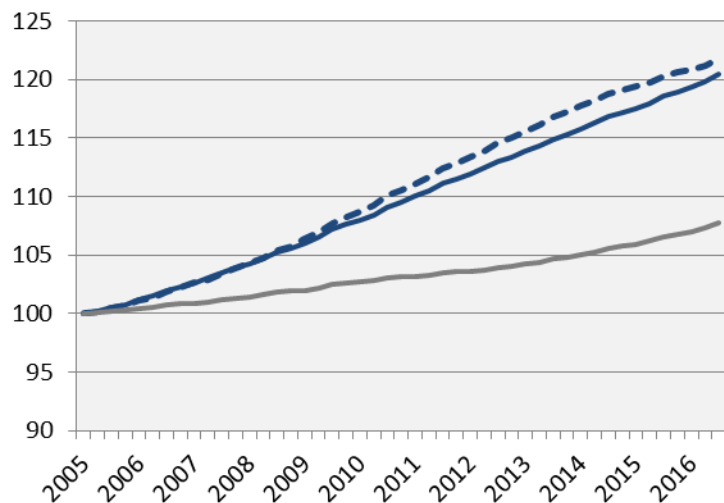
	<i>Number</i>	<i>Yearly change*</i>	<i>Unemployed out of population, 15-74 years</i>		
	2016 Q3		2010 Q1	2015 Q3	2016 Q3
Sweden	354 404	-11 575	6.2	5.0	4.8
Stockholm Region	157 287	-3 534	5.7	4.9	4.7
<b>Stockholm county</b>	<b>69 467</b>	<b>-2 287</b>	<b>4.4</b>	<b>4.3</b>	<b>4.1</b>
<b>City of Stockholm</b>	<b>30 068</b>	<b>-1 551</b>	<b>4.7</b>	<b>4.5</b>	<b>4.2</b>
Sweden, excl. Stockholm county	284 937	-9 288	6.7	5.2	5.0

— Stockholm county  
- - - City of Stockholm  
— Sweden, excl. Stockholm county

\*Last four quarters

# Population

Index 100 = 2005 Q1



Source: Statistics Sweden

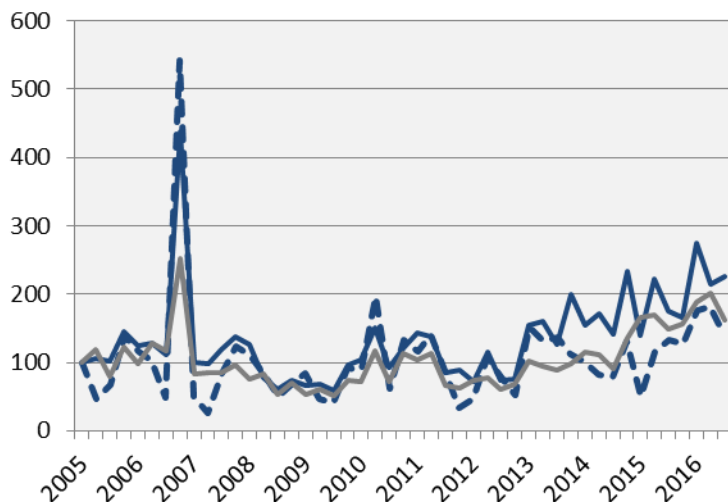
	2016 Q3 (in thousands)	Yearly ch. *	Growth (%) since,		
			2005 Q1	2010 Q1	2015 Q3
Sweden	9 954.4	125.8	10.4	6.4	1.3
Stockholm Region	4 484.8	62.9	13.7	8.4	1.4
<b>Stockholm county</b>	<b>2 260.8</b>	<b>36.6</b>	<b>20.5</b>	<b>11.6</b>	<b>1.6</b>
<b>City of Stockholm</b>	<b>932.9</b>	<b>11.4</b>	<b>21.8</b>	<b>12.0</b>	<b>1.2</b>
Sweden, excl. Stockholm county	7 693.6	89.1	7.8	5.0	1.2

\*Development last four quarters

— Stockholm county  
 - - - City of Stockholm  
 — Sweden, excl. Stockholm county

# Number of housing projects started

Index 100 = 2005 Q1



Source: Statistics Sweden

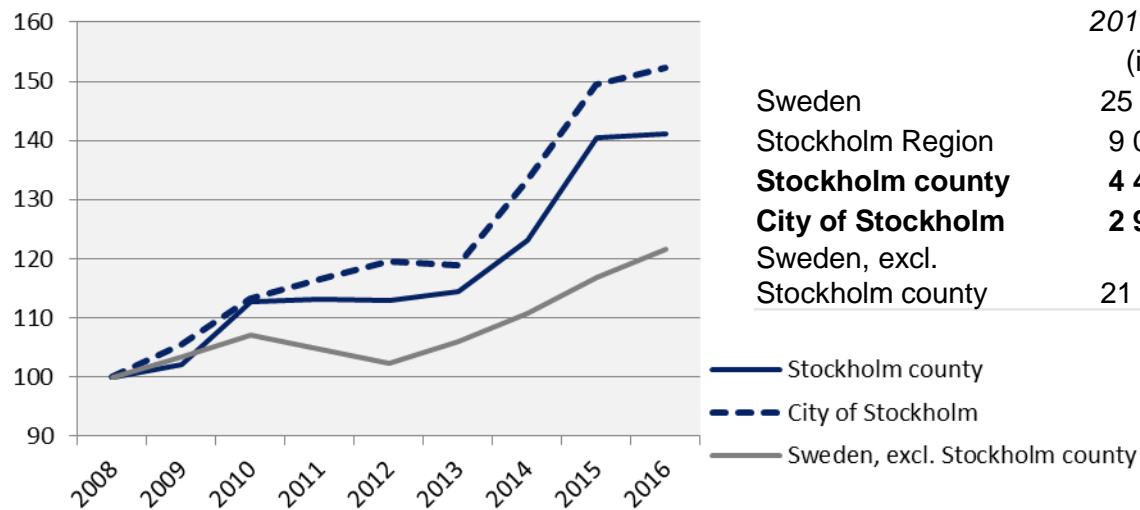
	2016 Q3		Yearly change*	
	Number	Ch., %	Number	Ch., %
Sweden	16 065	14.0	68 357	14.6
Stockholm Region	7 148	27.0	29 845	12.9
<b>Stockholm county</b>	<b>4 357</b>	<b>29.2</b>	<b>16 971</b>	<b>14.4</b>
<b>City of Stockholm</b>	<b>1 463</b>	<b>5.3</b>	<b>6 520</b>	<b>44.8</b>
Sweden, excl. Stockholm county	11 708	9.2	51 386	14.7

— Stockholm county  
- - - City of Stockholm  
— Sweden, excl. Stockholm county

\*Last four quarters

# Commercial Accommodations

Index 100 = 2008 Q3 (Q3, 2008 - 2016)



	2016 Q3 (in thousands)	Yearly ch. * (in thousands)	Growth (%) since,		
			2008 Q3	2010 Q3	2015 Q3
Sweden	25 760	61 478	24.5	15.3	3.2
Stockholm Region	9 041	25 441	27.2	19.0	3.1
<b>Stockholm county</b>	<b>4 430</b>	<b>13 305</b>	<b>41.2</b>	<b>25.3</b>	<b>0.5</b>
<b>City of Stockholm</b>	<b>2 913</b>	<b>8 926</b>	<b>52.4</b>	<b>34.6</b>	<b>2.0</b>
Sweden, excl. Stockholm county	21 331	48 306	21.6	13.5	4.0

\*Development last four quarters

# Stockholm Business Region

Stockholm Business Region is responsible for developing and promoting Stockholm as a business and tourist destination under the brand Stockholm - The Capital of Scandinavia.

The aim is to make Stockholm the leading sustainable growth region in Europe.

Stockholm Business Region is owned by the city of Stockholm and has two subsidiaries Invest Stockholm and Visit Stockholm.

For questions: Contact Stefan Frid, Invest Stockholm.  
Publisher: Olle Zetterberg, CEO Stockholm Business Region

## **Stockholm Business Region**

P.O. Box 16282

SE-103 25 Stockholm, Sweden

Phone + 46 8 508 280 00

[www.visitstockholm.com](http://www.visitstockholm.com)

[investstockholm.com](http://investstockholm.com)

[stockholmbusinessregion.se](http://stockholmbusinessregion.se)

