

# Stockholm Economy

**Q4 2016**

**March 2017**



# Stockholm Economy

## Q4 2016

### About the report

The report is published each quarter by Stockholm Business Region. The report includes Stockholm County and the City of Stockholm.

Statistics used is collected from Statistics Sweden, The Labour Exchange and The Swedish Companies Registration Office.

The report can be downloaded from:

<http://www.stockholmbusinessregion.se/en/facts--figures/#facts-about-business>

The Stockholm Region is defined as Stockholm County, Uppsala County, Södermanland County, Östergötland County, Örebro County, Västmanland County, Gävleborg County and Dalarna County. Individual county reports for the above mentioned can be found in Swedish here: <http://www.stockholmbusinessalliance.se/konjunkturrapporter/>

Questions can be addressed to Stefan Frid at Invest Stockholm.  
Publisher: Olle Zetterberg.

## Positive figures for Stockholm

During the fourth quarter 2016 Stockholm's economic growth continued. Aggregated gross pay data show positive growth figures both for Stockholm County and the City of Stockholm compared to the same quarter 2015.

In total 6 724 new companies were registered in Stockholm County during the fourth quarter of 2016, whereof the City of Stockholm accounted for 4 001. This represents a minor increases for both the county and the city compared to the fourth quarter 2015.

During the last quarter the number of persons employed increased as did the number of listed positions. The largest percentage increase of listed positions were in the information and communication sector followed by the construction sector. The number of people given notice however increased rapidly in both Stockholm county and in the city. The unemployment rate continued to decrease both in Stockholm County and the City of Stockholm compared to the same quarter in 2015.

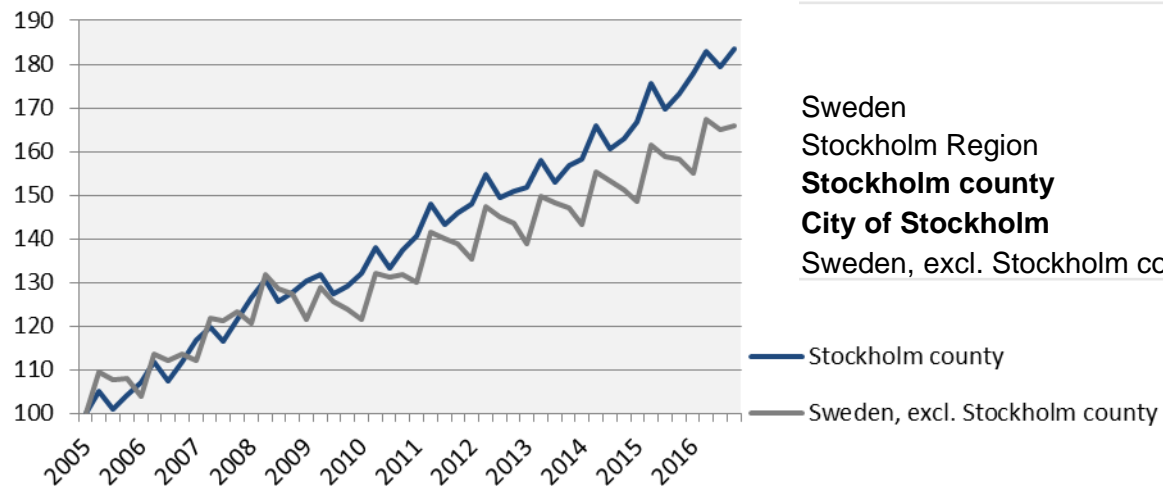
The last four quarters the number of residents has increased by 37 600 in Stockholm County, of which the City of Stockholm accounted for 12 100, representing a 1,7 % increase for the county and 1,3 % for the city.

The number of housing projects increased in both the county and the City of Stockholm in relation to the same quarter last year. In total, construction of 19 400 apartments were started in Stockholm County during the last four quarters, whereof about 7 500 in the City of Stockholm.

Olle Zetterberg  
CEO Stockholm Business Region

# Economic growth, private sector

Index 100 = 2005 Q1

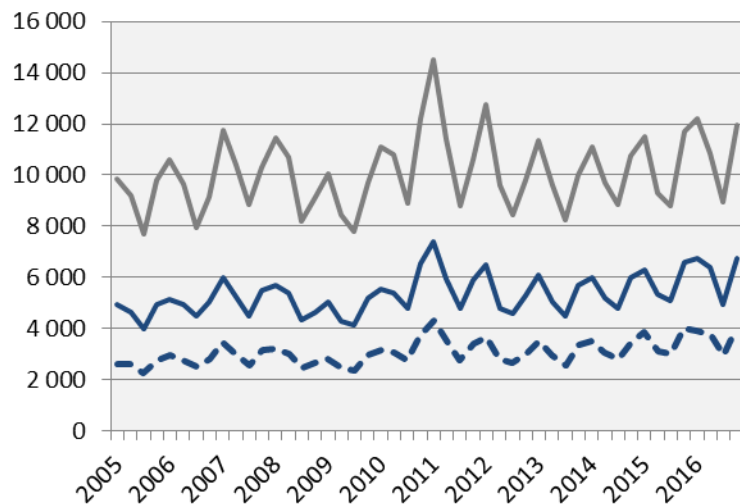


	2016 Q4	Change (%) since,		
	Billion cr.	2005 Q1	2010 Q1	2015 Q4
Sweden	304,9	71,4	37,4	5,2
Stockholm Region	156,3	77,1	37,9	5,5
<b>Stockholm county</b>	<b>101,5</b>	<b>83,6</b>	<b>39,0</b>	<b>6,0</b>
<b>City of Stockholm</b>	<b>66,0</b>	<b>n.d.</b>	<b>40,0</b>	<b>5,2</b>
Sweden, excl. Stockholm county	203,4	65,8	36,6	4,8

# Economic growth, 2016 Q4

	Stockholm county				City of Stockholm			
	Billion cr.	Growth (%) since,			Billion cr.	Growth (%) since,		
		2009 Q1	2010 Q1	2015 Q4		2009 Q1	2010 Q1	2015 Q4
<b>Total</b>	<b>123,6</b>	<b>39,5</b>	<b>37,7</b>	<b>5,9</b>	<b>76,7</b>	<b>40,1</b>	<b>38,0</b>	<b>5,3</b>
Agriculture, forestry & fishing	0,2	56,3	38,0	-0,7	0,0	127,7	49,4	-1,2
Manufacturing, mining, quarrying & utilities	8,8	7,5	11,6	3,3	4,2	11,6	11,9	2,0
Energy & Environment	1,1	42,4	40,6	3,7	0,5	-12,6	-1,9	0,7
Construction	7,8	75,5	70,0	7,1	3,8	96,9	114,2	8,3
Trade	15,9	33,6	27,8	4,6	9,0	38,5	30,3	3,9
Transport	5,4	24,8	20,6	3,8	2,4	23,7	17,0	1,6
Accommodation & food services	3,6	95,1	81,4	5,4	2,6	94,2	82,5	5,9
Information & communication	12,3	31,4	35,9	9,1	9,8	32,6	37,6	5,5
Financial & insurance	8,2	2,0	4,1	4,5	6,4	-2,1	0,0	3,1
Real Estate	2,3	66,1	60,5	4,3	1,6	62,1	58,6	4,8
Business services	20,5	62,5	62,0	8,0	16,1	62,1	62,0	7,4
Public administration	0,1	47,5	33,5	6,6	0,1	29,9	22,1	0,3
Education	3,0	71,4	62,8	8,2	1,7	74,1	66,5	8,1
Health	7,8	81,7	62,8	5,7	4,5	78,2	56,8	5,1
Personal & cultural services	4,2	54,2	47,4	4,3	3,1	51,7	44,3	4,7
Unspecified	0,3	46,1	73,6	0,9	0,1	54,2	22,6	-1,1
<b>Private sector</b>	<b>101,5</b>	<b>40,9</b>	<b>39,0</b>	<b>6,0</b>	<b>66,0</b>	<b>41,6</b>	<b>40,0</b>	<b>5,2</b>
State	8,6	37,6	34,2	3,2	6,0	32,9	28,0	3,8
Municipal	10,3	32,8	31,0	8,3	3,9	29,6	26,8	8,7
County council	3,3	24,8	31,6	5,2	0,9	32,3	20,4	5,5
<b>Public sector</b>	<b>22,2</b>	<b>33,3</b>	<b>32,3</b>	<b>5,8</b>	<b>10,7</b>	<b>31,6</b>	<b>26,9</b>	<b>5,6</b>

# The number of newly registered businesses

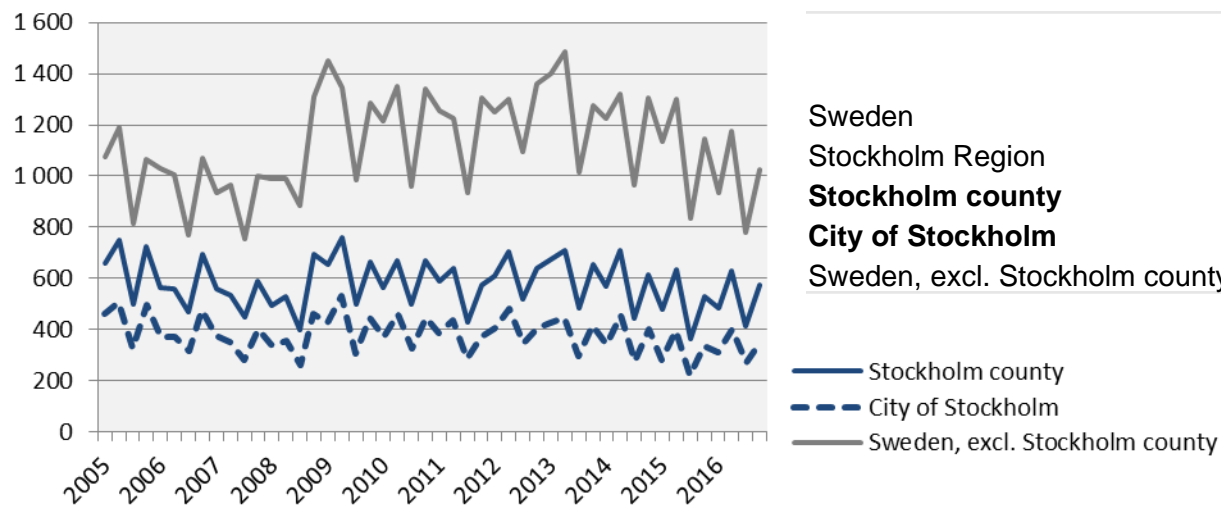


	2016 Q4		Yearly change*	
	Number	Ch., %	Number	Ch., %
Sweden	18 691	2,2	68 793	6,4
Stockholm Region	9 816	1,2	36 411	6,2
<b>Stockholm county</b>	<b>6 724</b>	<b>2,0</b>	<b>24 808</b>	<b>6,5</b>
<b>City of Stockholm</b>	<b>4 001</b>	<b>0,1</b>	<b>14 666</b>	<b>5,0</b>
Sweden, excl. Stockholm county	11 967	2,3	43 985	6,4

\*Last four quarters

— Stockholm county  
 - - - City of Stockholm  
 — Sweden, excl. Stockholm county

# Company bankruptcies

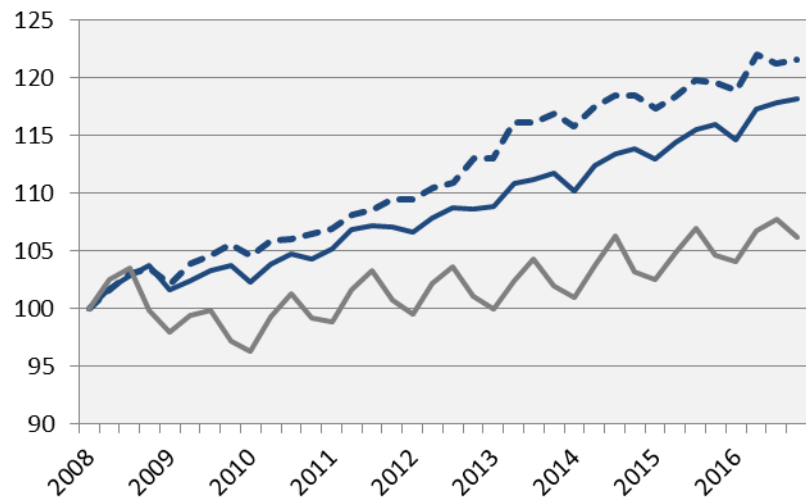


	2016 Q4		Yearly change*	
	Number	Ch., %	Number	Ch., %
Sweden	1 596	-4,8	6 019	-6,3
Stockholm Region	844	3,9	3 090	-2,4
<b>Stockholm county</b>	<b>573</b>	<b>8,1</b>	<b>2 103</b>	<b>4,8</b>
<b>City of Stockholm</b>	<b>350</b>	<b>3,2</b>	<b>1 336</b>	<b>7,5</b>
Sweden, excl. Stockholm county	1 023	-10,7	3 916	-11,4

\*Last four quarters

# Employment

Index 100 = 2008 Q1



Source: Statistics Sweden

	<i>Number</i>	<i>Growth</i>	<i>Growth (%) since,</i>		
	2016 Q4	Yearly ch.*	2008 Q1	2010 Q1	2015 Q4
Sweden	4 920 900	73 600	8,9	11,5	1,5
Stockholm Region	2 253 700	33 500	11,8	12,5	1,5
<b>Stockholm county</b>	<b>1 209 800</b>	<b>21 800</b>	<b>18,1</b>	<b>15,5</b>	<b>1,8</b>
<b>City of Stockholm</b>	<b>529 300</b>	<b>9 000</b>	<b>21,6</b>	<b>16,3</b>	<b>1,7</b>
Sweden, excl. Stockholm county	3 711 100	51 800	6,1	10,3	1,4

— Stockholm county  
 - - - City of Stockholm  
 — Sweden, excl. Stockholm county

\*Last four quarters

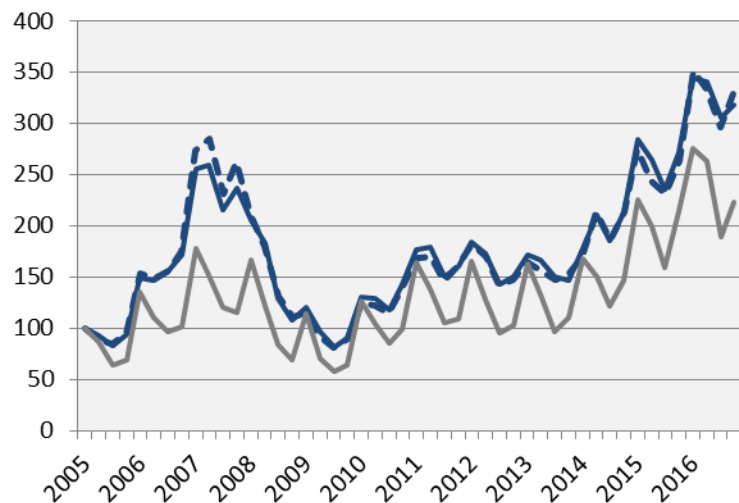
# The number of employed people in Stockholm County

	<i>Number</i>	<i>Growth</i>	<i>Growth (%) since,</i>		
	2016 Q4	Yearly ch.*	2008 Q1	2010 Q1	2015 Q4
<b>Total</b>	<b>1 209 800</b>	<b>21 800</b>	<b>18,1</b>	<b>15,5</b>	<b>1,8</b>
Agriculture, forestry & fishing	n.d.	n.d.	n.d.	n.d.	n.d.
Manufacturing, mining, quarrying & utilities	59 200	-200	1,7	1,4	-0,3
Manufacturing of workshop products	27 400	-1 700	-4,2	-8,7	-5,8
Construction	69 000	4 400	15,0	21,5	6,8
Trade	139 800	-2 400	4,0	9,9	-1,7
Transport	59 900	2 500	12,8	9,9	4,4
Accommodation & food services	49 600	1 900	38,5	33,7	4,0
Information & communication	96 600	8 500	26,4	22,0	9,6
Arts, entertainment, recreation & other services	71 000	1 100	13,6	10,9	1,6
Financial & insurance	306 100	2 400	27,0	19,1	0,8
Public administration	79 900	2 200	23,1	11,7	2,8
Education	125 200	-1 700	19,2	13,5	-1,3
Health	145 400	6 800	17,2	18,4	4,9
Unspecified	n.d.	n.d.	n.d.	n.d.	n.d.
Employed in Sweden	1 206 100	23 500	18,2	15,6	2,0
Employed abroad	3 600	-1 800	5,9	-2,7	-33,3



# Number of recently listed positions

Index 100 = 2005 Q1



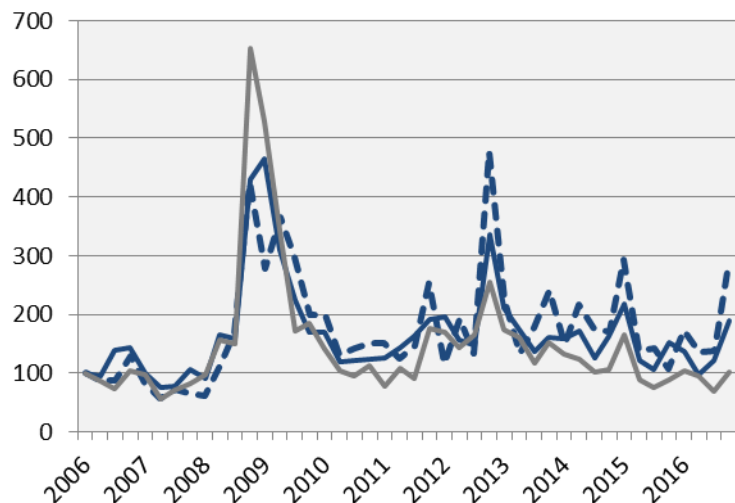
	2016 Q4		Yearly growth*	
	Number	Ch., %	Number	Ch., %
Sweden	308 239	7,9	1 299 710	20,6
Stockholm Region	153 659	12,4	636 583	21,3
<b>Stockholm county</b>	<b>96 398</b>	<b>17,3</b>	<b>396 662</b>	<b>23,9</b>
<b>City of Stockholm</b>	<b>67 103</b>	<b>25,8</b>	<b>265 545</b>	<b>29,6</b>
Sweden, excl. Stockholm county	211 841	4,1	903 048	19,2

— Stockholm county  
 - - - City of Stockholm  
 — Sweden, excl. Stockholm county

\*Last four quarters

# The number of people given notice

Index 100 = 2006 Q1



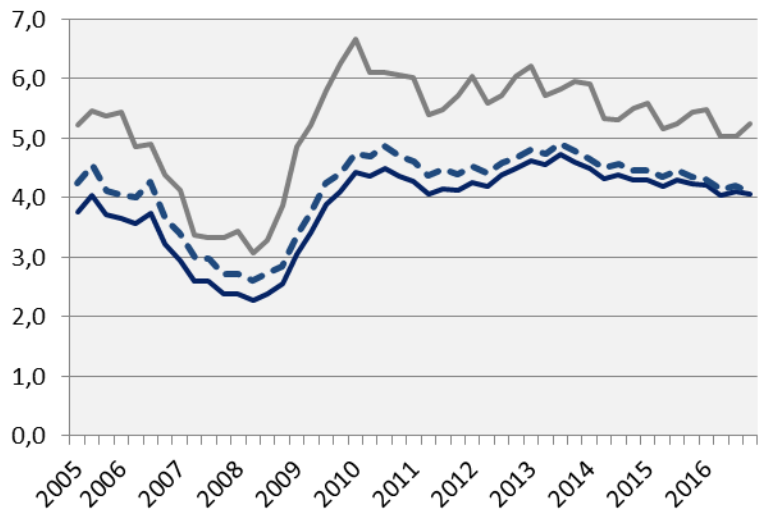
Source: The Labor Exchange

	2016 Q4		Yearly change*	
	Number	Ch., %	Number	Ch., %
Sweden	11 454	18,2	38 587	-10,6
Stockholm Region	5 961	18,4	18 796	-13,2
<b>Stockholm county</b>	<b>3 829</b>	<b>23,8</b>	<b>11 006</b>	<b>-8,9</b>
<b>City of Stockholm</b>	<b>2 532</b>	<b>166,2</b>	<b>6 473</b>	<b>7,7</b>
Sweden, excl. Stockholm county	7 625	15,5	27 581	-11,2

— Stockholm county  
 - - - City of Stockholm  
 — Sweden, excl. Stockholm county

\*Last four quarters

# Unemployment in relation to the population (%), 15-74 years



Source: The Labor Exchange and Statistics Sweden

	Number	Yearly change*	Unemployed out of population, 15-74 years		
	2016 Q4		2010 Q1	2015 Q4	2016 Q4
Sweden	366 390	-9 662	6,2	5,2	5,0
Stockholm Region	160 099	-3 557	5,7	5,0	4,8
<b>Stockholm county</b>	<b>68 760</b>	<b>-1 987</b>	<b>4,4</b>	<b>4,2</b>	<b>4,1</b>
<b>City of Stockholm</b>	<b>29 426</b>	<b>-1 442</b>	<b>4,7</b>	<b>4,4</b>	<b>4,1</b>
Sweden, excl. Stockholm county	297 629	-7 676	6,7	5,4	5,2

— Stockholm county

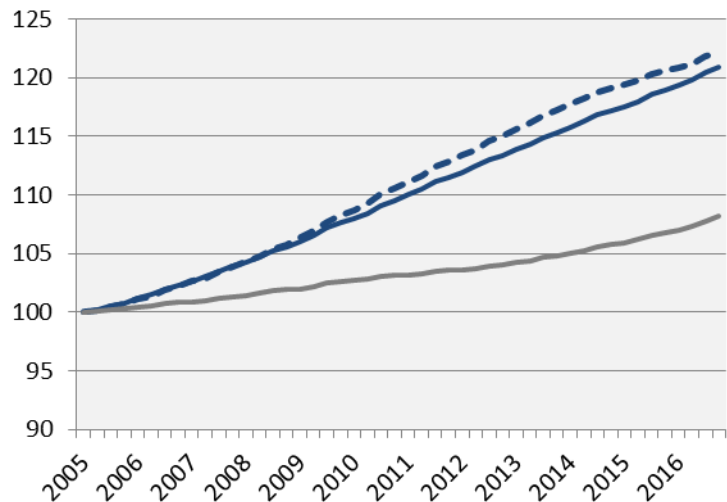
- - - City of Stockholm

— Sweden, excl. Stockholm county

\*Last four quarters

# Population

Index 100 = 2005 Q1



Source: Statistics Sweden

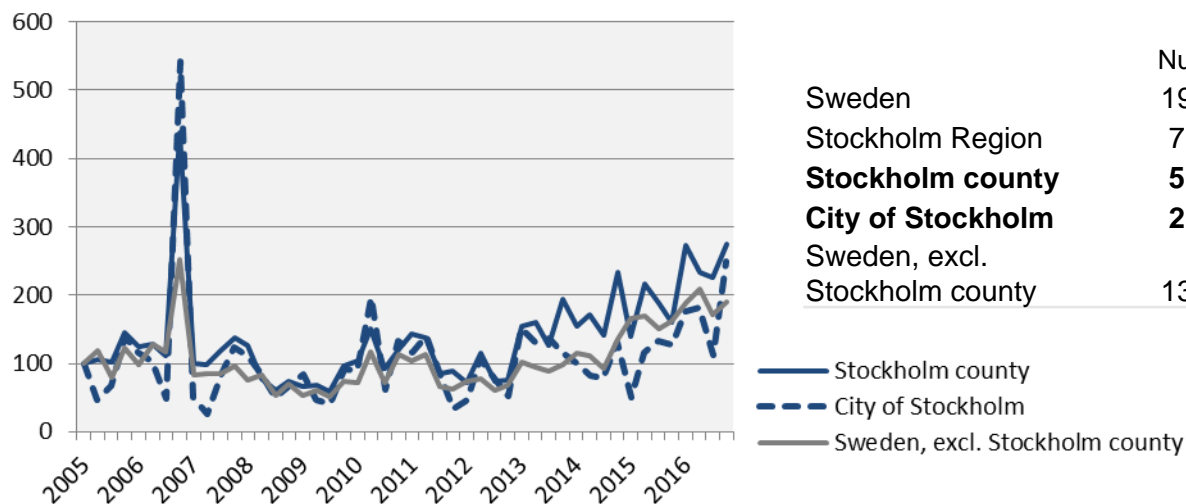
	2016 Q4 (in thousands)	Yearly ch. *	Growth (%) since,		
			2005 Q1	2010 Q1	2015 Q4
Sweden	9 995,2	144,1	10,9	6,8	1,5
Stockholm Region	4 502,3	69,2	14,2	8,8	1,6
<b>Stockholm county</b>	<b>2 269,1</b>	<b>37,6</b>	<b>20,9</b>	<b>12,0</b>	<b>1,7</b>
<b>City of Stockholm</b>	<b>935,6</b>	<b>12,1</b>	<b>22,1</b>	<b>12,4</b>	<b>1,3</b>
Sweden, excl. Stockholm county	7 726,1	106,5	8,2	5,4	1,4

\*Development last four quarters

— Stockholm county  
- - - City of Stockholm  
— Sweden, excl. Stockholm county

# Number of housing projects started

Index 100 = 2005 Q1



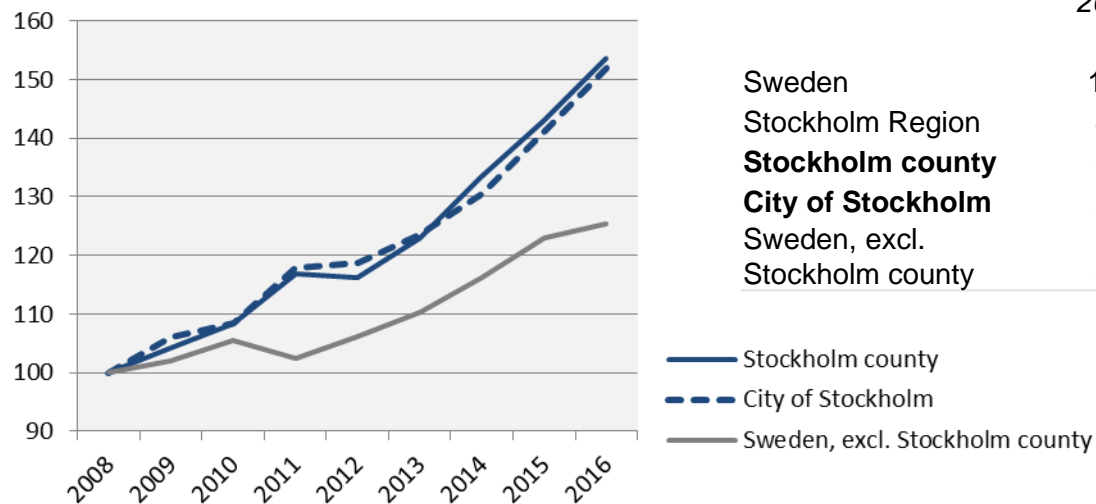
Source: Statistics Sweden

	2016 Q4		Yearly change*	
	Number	Ch., %	Number	Ch., %
Sweden	19 153	29,7	74 490	23,0
Stockholm Region	7 724	25,0	31 872	21,4
<b>Stockholm county</b>	<b>5 303</b>	<b>71,6</b>	<b>19 417</b>	<b>43,0</b>
<b>City of Stockholm</b>	<b>2 599</b>	<b>96,7</b>	<b>7 502</b>	<b>68,3</b>
Sweden, excl. Stockholm county	13 850	18,6	55 073	17,2

\*Last four quarters

# Commercial Accommodations

Index 100 = 2008 Q4 (Q4, 2008 - 2016)



	2016 Q4 (in thousands)	Yearly ch. * (in thousands)	Growth (%) since,		
			2008 Q4	2010 Q4	2015 Q4
Sweden	10 124	61 862	33,0	25,2	3,7
Stockholm Region	4 898	25 630	30,4	23,7	3,4
<b>Stockholm county</b>	<b>3 129</b>	<b>13 506</b>	<b>53,6</b>	<b>41,8</b>	<b>7,4</b>
<b>City of Stockholm</b>	<b>2 145</b>	<b>9 080</b>	<b>52,0</b>	<b>40,1</b>	<b>7,7</b>
Sweden, excl. Stockholm county	6 995	48 356	25,5	19,0	2,1

\*Development last four quarters

# Stockholm Business Region

Stockholm Business Region is responsible for developing and promoting Stockholm as a business and tourist destination under the brand Stockholm - The Capital of Scandinavia.

The aim is to make Stockholm the leading sustainable growth region in Europe.

Stockholm Business Region is owned by the city of Stockholm and has two subsidiaries Invest Stockholm and Visit Stockholm.

For questions: Contact Stefan Frid, Invest Stockholm.  
Publisher: Olle Zetterberg, CEO Stockholm Business Region

## **Stockholm Business Region**

P.O. Box 16282

SE-103 25 Stockholm, Sweden

Phone + 46 8 508 280 00

[www.visitstockholm.com](http://www.visitstockholm.com)

[www.investstockholm.com](http://www.investstockholm.com)

[www.stockholmbusinessregion.se](http://www.stockholmbusinessregion.se)

